

# Cumberland Forest LP

*Creating a world where people and nature thrive*

---

## Greg Meade – Cumberland Forest Project Dir

March 7, 2024 – Appalachian Carbon Forum, Lexington KY

---

Nature

Cumberland Forest  
Limited Partnership

Community

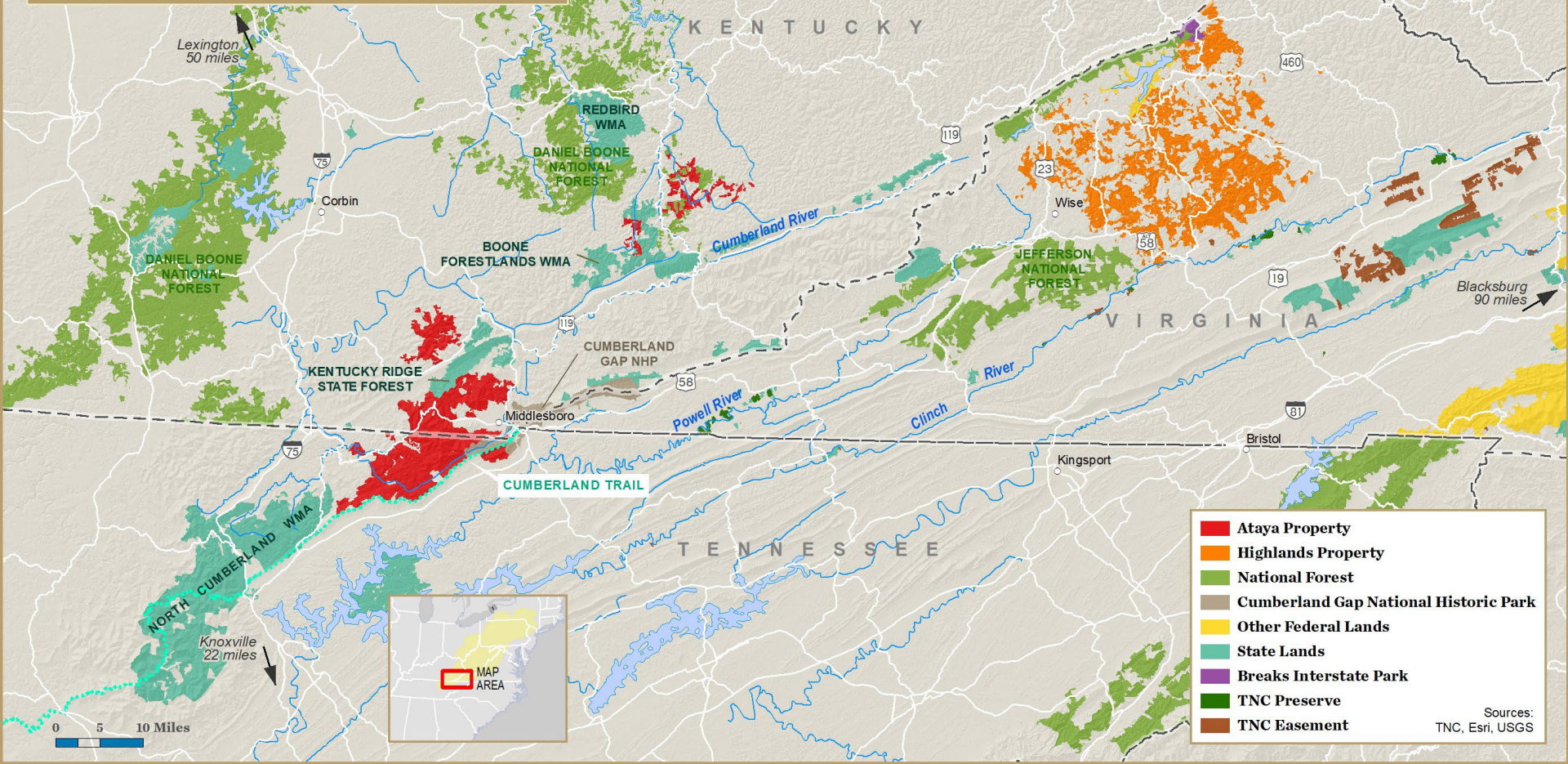
Economy

# Ataya and Highlands Properties: Geographic and Conservation Setting

CONFIDENTIAL: DO NOT DISTRIBUTE

natureVest™

The Nature Conservancy



- Ataya Property
  - Highlands Property
  - National Forest
  - Cumberland Gap National Historic Park
  - Other Federal Lands
  - State Lands
  - Breaks Interstate Park
  - TNC Preserve
  - TNC Easement
- Sources:  
TNC, Esri, USGS



# FSC Forestry and Forest Carbon



Restoration





EIk





# Recreational Trails



**Dominion  
Energy®**

Actions Speak Louder

Solar



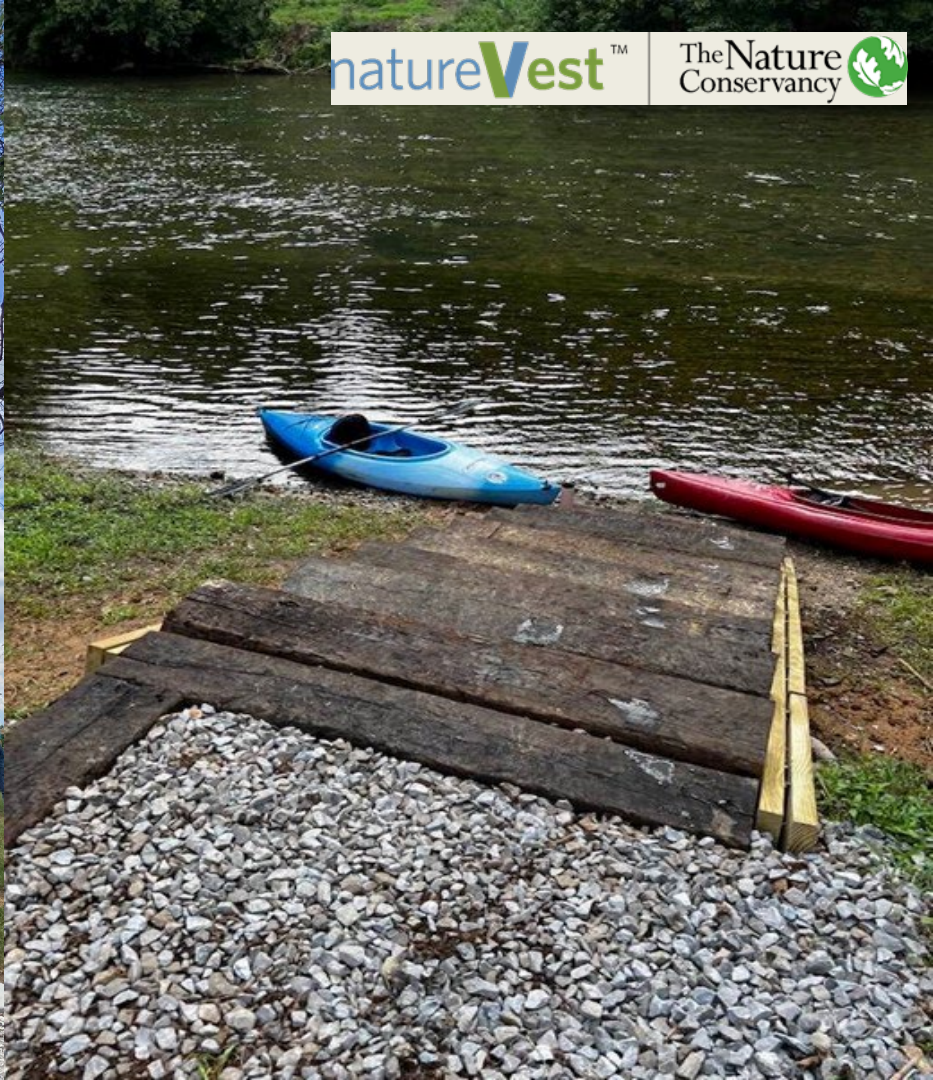




# Mined Land Reclamation



COMMUNITY FUND





Long-Term Protection (Public Access and Open  
Space Easements)

Questions?